

FILTERS

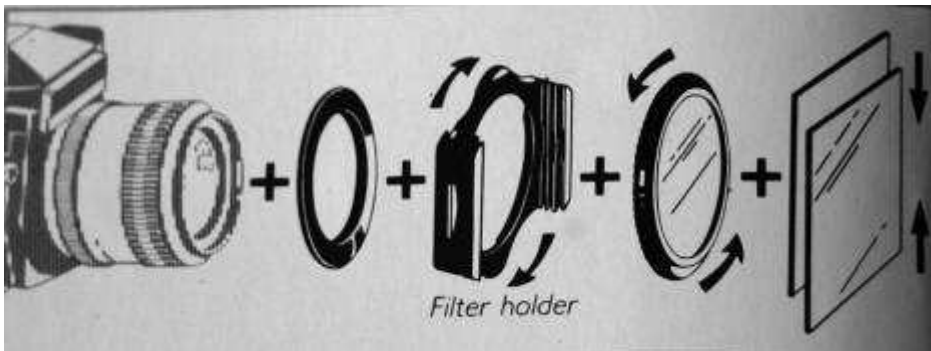
Use filters for fun and to improve your images.

There are many different brands of filters on the market. Two common types are:

- “Screw- on” which are screwed to the front of a lens.
- A system which has an adaptor which is screwed on to the front of a lens and then square or rectangular filters are slid into the adaptor. There are a couple of brands of this style of filter system, just as there are many brands of screw-on filters.
- Many of you will already have UV or Skylight filters to protect the surface of your lens.
- While you can “stack” filters so that you do not have to remove your *lens protecting* filter, you will get some vignetting with wide angle shots. Stacking can give fantastic effects, also some bizarre images.

Filters can give your images impact, can darken a dull sky with tobacco or grey graduated filters or make it bluer with a blue graduated filter.

A polarizing filter will control glare and eliminate unwanted reflections. Great for seeing rocks or fish through water. You can put in a rainbow, add stars patterns or make multi image pictures.



Filter Adaptor System



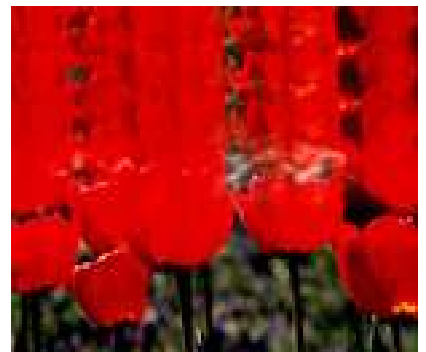
Screw on Filter



Star Filter



Polarising Filter



Multiple Image Filter



Graduated Tobacco Filter



Graduated Grey Filter



Fog Filter

Text and images Fran Cross LAPS PSQA